

# AVUCC

---

---

# KALOS

Newsletter for the  
Almaden Valley  
United Church of Christ

## Pastor Kevin's Corner:

### *Bread for the World*

There is an ancient Latin phrase, *errore hominum providential divina*, which translated in to English means "that divine providence works through human sinfulness." Much of the suffering in the world, both human and creaturely, is the result of systemic evil or sinfulness. By "systemic" I mean evil or sin that is imbedded in the way we humans collectively act or respond in ways detrimental to healthy living where no one individual is at fault, but collectively as a human organization or species we are responsible for terrible wrongs done to people and nature. A hungry child or starving homeless person can be victims of this systemic evil or sinfulness.

A few weeks ago, during one of our children's sermons, Carolyn Dingman presented a wonderful message about bread and starvation to our children. If my memory serves me correctly, Carolyn made the point that the problem of people starving was not one of production of bread and food, but rather the breakdown in the distribution system which resulted in people starving for lack of society's ability to get the bread to those needing it. Often times the problem with the food distribution system is directly due to lack of political will or human neglect which results in road blocks to getting food to those who need it. As a result, hungry people starve and die.

In the current issue of *The Christian Century* there is a brief report that our nation's food bank system is stretched to the point of failing to serve the

## KALOS

Monthly Newsletter

Almaden Valley United Church of Christ  
6581 Camden Avenue, San Jose, CA 95120  
(408) 268-0243; Fax: (408) 268-4207

Visit our website: [www.avucc.org](http://www.avucc.org)

Editors, Sue Scaff (448-3038)  
Kelly Yamanishi (997-3373)  
Kalos email: [kalos@avucc.org](mailto:kalos@avucc.org)



## February 2008

### *In this issue*

*Pastor Kevin's  
Corner* — 1 -2

*Moderator's Notes* — 2

*ONA Update* — 3

*Finances* — 4

*People in the Pews* — 4-5

*Outreach* — 6

*Youth* — 6-7

*Voyager (Men's Group)* — 7

*Men's Breakfast* — 7-8

*Birthdays and Anniversaries* — 9

*Worship* — 9

*Calendar* — 10

*Lectionary* — 11

most needy and hungry in our own country. The United States Department of Agriculture estimates that there are 35.5 million Americans who are “food insecure.” Not only is demand up for food bank services due to greater need but as prices of grain rise and grocery chains donate less and less food there are decreasing donations to food shelters. I suspect that there is a measure of human systemic greed that underlies the downward turn in available foods available for donation.

When Jesus was teaching to the crowd one of the first things he took care of was to make sure that the people were fed enough fish and bread. Some believe he did this through a supernatural miracle, but I like to believe that he inspired people to share what they had brought with them with others who had nothing. I also believe that Jesus has inspired our church for many years to be concerned about the food needs of people in our community. The grace-filled and generous work that this congregation performs in providing the shelter meals is a direct result of God working through our people to combat human sinfulness and starvation. Our shelter meals program is an element of working through God’s providence to challenge systemic sinfulness head on. God bless all of you who have supported the shelter meals program with your time and donations. It’s needed more than ever. Good going AVUCC! Amen.

*Pastor Kevin*

---

“Century Marks: Mysterious Ways” in *The Christian Century*, January 29, 2008, Vol. 128, No2, page 8.  
“Empty Shelves” in *The Christian Century*, January 29, 2008, Vol. 128, No2, page 7.

### **Moderator’s Note**

As I write this, my older children are studying for finals and looking forward to the fresh start of a new semester in school. Their fall grades will be recorded and then the slate will be wiped clean and new possibilities open up for the spring. We are making a fresh start at church too. We are going to formally discuss becoming an open and affirming

church. We are going to define "open and affirming" as it relates to AVUCC. We are going to discern what the differences are between an ONA church and a church that is not ONA. And we are going to finally reach a resolution.

In order to do this, the council has asked me to form a committee to guide the congregation in this discernment process. The committee is diverse in individual opinions about this issue, but is committed to seeing the process happen in a way that will reduce the polarization and division we have been experiencing so that we can once again be a loving, caring body.

My personal definition of success for this process is twofold. 1. We the congregation of AVUCC reach a decision. 2. We understand that all are welcome at AVUCC regardless of the decision we make. In order to achieve this, we all need to participate in the process. We need to listen to the speakers, participate actively in discussions, and hear each other with open hearts and closed mouths. We need to remember that it is okay, even a good thing, to disagree. But let's agree and disagree respectfully and honestly out in the open. Let's not disagree by withholding participation, staying away, not contributing time, and not pledging. Let's not disagree by ending relationships and cutting ties. Let's disagree about this one issue and then agree about how important it is to care for each other's needs in difficult time. Let's agree about improving our Christian education and expanding our youth program. Let's agree on growing our membership and remaining a loving community. Let's agree on glorifying God and our Savior.

We share so much, let's not get bogged down. Let's move forward. Together.

*Melanie Click*

## What's the status of ONA?

At the last council meeting, the council voted to have the moderator appoint a committee to address the Open and Affirming issue. The task of the committee is to decide on a process in which to educate the congregation about ONA and what it would mean for us in an attempt to develop a consensus and bring about a congregational vote by April 6th in order to definitively resolve the issue so that we can move on to other matters.

This ONA committee consists of Byron Henderson, Melanie Click, Ed Grossmith, Bessie Hutchins, Jim Ballek, and Debbie Bemis. Pastor Kevin will be sitting in on our meetings as well. At our first meeting we decided to develop a mission statement for future meetings in order to help keep us focused on the task at hand. Our mission statement is as follows:

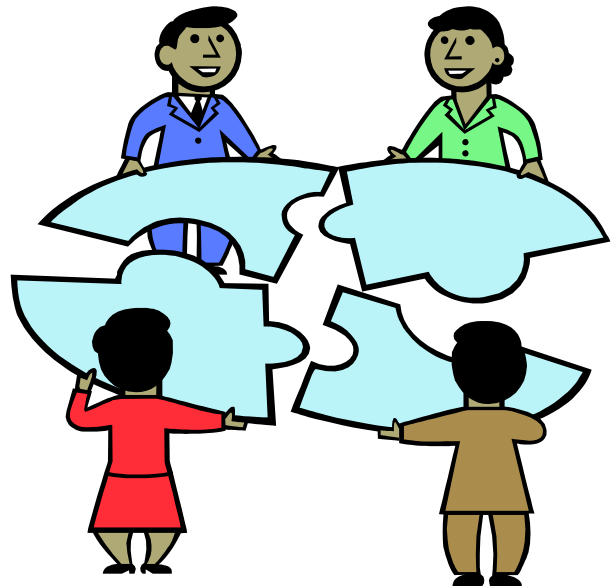
To develop a process to educate the congregation on the meaning of Open and Affirming as it relates to AVUCC and the potential effects, both pro and con, it may have on existing church life.

April 6th is not that far away, and we have our work cut out for us. In addition to deciding on a mission statement, we are working on developing a clear definition of ONA and what it means to us. Please know that this definition is not an ONA statement, but rather a clarification for us to refer to in this discovery process. The committee is also discussing the "process" and what that might look like. What we currently envision is a series of informational meetings which would include question/answer sessions and discussion on a topic related to ONA. We would like to bring in people from outside AVUCC who have expertise on and/or experiences with ONA, both pro and con. Topic ideas are:

What IS and what IS NOT Open and Affirming?  
Biblical aspects of homosexuality  
What would ONA do for our church?  
What are the alternatives to ONA?

Obviously we are still in the planning stages. We are clear, however, on the target date set by the council, which is April 6th, and it is our intention to move on things quickly. In order for us as a congregation to become truly educated on ONA and truly knowledgeable about the effect it may have on us, it will be vitally important to have as much congregational participation and input as possible at these informational meetings and discussions. As difficult or uncomfortable of a topic as this is for some of us to broach, it needs to be discussed so that we can reach a resolution to this issue and move on. The issue is in front of us. The time is now. Please come learn about it and share your opinions so that as a congregation, we can make an informed decision about whether or not we want to adopt an ONA statement. Be watching for information on these informational meetings to be coming in the next couple of months. We would really like to have YOU there.

*Respectfully submitted by  
Debbie Bemis*



## Monthly Financial Report December 31, 2007

Total Income for this month:	\$ 17,655
Total Expenses for this month:	<u>12,865</u>
Excess for the month of December:	\$ 4,790

Our "Year to Date" Report:

Total Income for 2007:	\$181,732
Total Expenses for 2007:	<u>181,584</u>
Our total excess for the year 2007:	\$ 148

Alternative Christmas Disbursements: \$ 3,677

Our Cash Balances as of December 31<sup>st</sup>

Citibank - Checking	\$ 36,864
Citibank – Money Market	53,787
Corp America CU	<u>63,272</u>
Total Cash Balances:	\$ 153,923

A detailed Financial Report for the month of December is posted on our bulletin board. The month of December was a very good month. We have exceeded our expenses by \$4,790. In doing this our total income for 2007 exceeded our total expenses by \$148.

Our thank-you goes to all of you for making 2007 a successful year.

Respectfully Submitted,  
*Stan Yumen*

## People in the Pews

### Folks to keep in our prayers:

Bud Elliott, Dennis' dad, is having serious health issues and Dennis and his sister are faced with making choices for how to best care for Bud. This is a difficult time for the Elliott family.

Judy Martin's dad is now back home after an extended stay in care facilities. He seems to be doing better and her Mom is grateful to have him back with her at home again. They live in Ohio and Judy gets back to check on them as her time allows.



Prayers for David Sanders mother who is having difficulty swallowing.

Prayers for Cliff Click's mother who lives in Texas and is being treated for a staph infection.

Ellie Mills has been diagnosed with shingles and is very uncomfortable; please keep her in your prayers.

Phyllis Green seems to be well on the road to recovery following her long bout with shingles.

Betsy Shoup recently had surgery to remove bone spurs from her shoulder. Hope she will have a good recovery.

John Graham is recovering quite well from his recent shoulder surgery.

Peggy Wright is recuperating from surgery to remove her gall bladder and also a lesion on her pancreas. We hold her and Jim in our prayers as she recovers from this major surgery.

Nancy Palmer Jones is still having some discomfort from severe hip and back pain. We pray for her to get relief from this pain and be up and around with more comfort.

The Memorial Service for Alice Cox was held at the Unitarian Church on Jan. 12th. Pastor Kevin and Nancy Palmer Jones both officiated at this special service. Bill Cox is having great difficulty with the loss of his very special partner and we pray he will find comfort from his family and many friends.

## Our Deepest Sympathy

Toh Bee Syn's sister-in-law Belinda, wife of Toh Bee's brother Tom, just passed away from cancer. We have had the family on our prayer list for several months and continue to hold them in our thoughts at this sad time in their loss. A Memorial Service was held at our church on January 27th.

### Reasons to be Grateful

Dennis and Lynn Widman are looking forward to the birth of a baby girl in May to their daughter Sheri and her husband. The new baby will join her big brother who was born last year. More reason for celebration at the Widman's is the announcement on Christmas Eve of Andrea's engagement. Lots of reasons to be grateful for family.

### On Leave

Sue Scaff will be on the East coast for 7 months. She will be doing some research work and also spending lots of time with the grandchildren. Phyllis Chai has graciously agreed to cover Sue's role on Council for that time frame.

Thank You to Hank DeVoss and Pete Mayo for cleaning up our surrounding grounds following the big storms.

Thank you to Dennis Moran and his crew for the beautiful new altar table. The workmanship is incredible and beautiful to look at. (See Dennis' article elsewhere in this issue.)

### Congratulations to...

Andrew Garg, son of Kimberly, has recovered so well from his surgery in Sept. on his rotator cuff he is now competing in wrestling at Leland H.S. In a recent tournament he went undefeated in 5 matches, and got an award for the fastest pin (14 secs.) and best overall. In another wrestling event with 24 schools competing (Varsity) he placed 4th. Andrew is a sophomore at Leland. He plans to play football again in the fall. We hope he will continue to be injury free!

## Travelers on vacations

John and Diane Hawes are enjoying time in Maui and the chance to be with their children and grandchildren.

Kathy Kisabeth is on a cruise to the Antarctic and know that will be quite an experience for her. Will be eager to hear about this adventure.

Barbara Alumbaugh enjoyed her trip to Mexico.

Your Life Has Purpose and Meaning.

I Corinthians 12: 26-27 "If one part suffers, every part suffers with it; if one part is honored, every part rejoices with it. Now you are the body of Christ, and each one of you is a part of it.

## Inspiration

You may say, "I don't have anything to give." Sure you do! You can give a smile. You can give a hug. Somebody needs what you have to share. Somebody needs your friendship. Somebody needs your encouragement. God didn't make us to function as "Lone Rangers." He created us to be free, but He did not intend for us to be independent of each other. We really do need one another.

-Joel Osteen

## **USHERS ALWAYS NEEDED!**

I am thankful to all of you who so willingly agree to be ushers. If I haven't asked you lately, and you would like to serve, PLEASE CALL ME or see me at church. Always welcome new folks to be involved.

2008 ushers list has many empty spaces right now - won't you help me fill in those blanks?

(If you have news to share, please give me a call, I will welcome your input)

*Dot Allfrey*

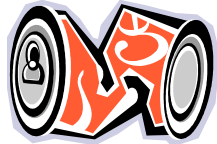
## Outreach

### Opportunity Arises!

The Caring Committee is in need of co-chairs for 2008. The chairs serve for two month periods. The first new co=chairs are needed for the April/May assignment. Please contact Ariss at 997-1916 or Carolyn Crowley at 997-0819.

Thank you.

### Aluminum Cans for Habitat for Humanity



Your saving and delivering to church of empty aluminum cans is providing a very much needed and appreciated cash input to the Silicon Valley Chapter of Habitat for Humanity. Last year, these efforts yielded \$807 for their good work. Very well done and let me thank you for them.

In 2008 we will be collecting cans on four separate weekends. These weekends are: February 9 & 10, May 10 & 11, August 9 & 10 and November 8 & 9. The sign announcing the can collection will go up in front of the church early in the week before the collection weekend. Your bagged aluminum cans can be left when the sign is up by the shed at the back of the church parking lot near the Rose Garden.

Have a wonderful New Year and keep collecting and saving those cans.

*Tom the Can Man*

### Beneficio Coffee

What more could a "Valentine" coffee-drinker want to go with that box of chocolates than a wonderful bag of "Beneficio More Than Fair Trade Coffee" ? Still, a bargain at \$7.75/12 oz. bag. Please contact Phyllis Chai (226-7150) to place your order.

## 2007 Christmas Fund Offering Results

The Christmas Fund Offering (formerly the Christmas Fund for the Veterans of the Cross), one of the four Special Mission Offerings of the UCC, is an important way of sharing our joy at God's renewing and life-giving grace. Gifts to the Fund help provide pension and health premium supplementation to low-income retirees, emergency assistance to the families of clergy and lay employees and Christmas Gift Checks to hundreds of annuitants. Our gifts are needed more than ever to help the growing number of retirees whose low income annuities make it difficult to meet increasing living costs.

Thank you to all who supported our annual UCC Christmas Fund in December, to benefit UCC retired clergy/lay staff. The total offering was \$756.00.

*Betsy Shoup and Phyllis Chai*

## Youth News



### SHROVE TUESDAY PANCAKE DINNER, February 5, 2008

This dinner is put on by the Joint Venture Youth Groups on Shrove Tuesday every year. The kids do the set up, cooking, and would like some help with clean up. We'll begin serving at 5:30 and end around 7:15pm. The price charged for dinner is \$3.00 for children under 5 years-old and \$5.00 for everyone else including the youth. We'll set up 8 tables with some Mardi Gras beads and masks as center pieces and whatever other decorations the youth want to put up.

We'll have pancakes, sausage, bacon, cheeses, fruit and assorted goodies to top your meal. Juice, coffee, tea and milk will be served. If you have special needs for instance wheat free or sugar free items please contact Katie Taplin/McCormick.

Cooking will start around 3PM and we'll be cleaned up by 8:30PM

*See you there., Katie*

## JHYG's and SHYG's

Our outreach fundraising was wonderful this year. The JHYG's raised \$1000.00 from the pie sales and the bake sale. The SHYG's raised over \$1200.00 from donating their time and efforts to the servant auction. We adopted two families from the Educational Opportunity Programs and Services at West Valley College. The EOP&S Program at West Valley College extends opportunities for higher education to culturally diverse and underrepresented students who have been historically hindered by language, social and economic barriers. EOP&S is committed to ensuring access and support services to eligible students in order that they may participate in a wide spectrum of educational experiences designed to fulfill their academic needs, expand their human potential and enrich the quality of their lives. The intent of the EOP&S Program is to support the students in their preparation for the challenges of an ever increasingly technological and multicultural society.

We headed out with our deep pocketbooks and open hearts to Target where we loaded up 5 carts full of clothing, toys and goodies for two families. It was great fun to check in with each group to see how they were doing as to a variety of items and how well they were keeping track of their spending. It was a joy filled evening. We spent about \$200.00 on each person which leaves us with some extra outreach money. Where this money will go has yet to be decided.

Thank you everyone for supporting our youth in their efforts to help others. The families chosen through this program have always been extremely grateful.

### Upcoming events

**Joint youth** - Ski trip Jan 18-21

Feb. 5 Shrove Tuesday pancake dinner,

### **SHYG's**

Sun. Feb 10 – 6-8 at the church

Sun. Feb 24 – 6-8 outing

Sat. Mar. 15, Catacombs

### **JHYG's**

Sun. Feb. 3

Sun. Feb 17th outing

### **Men's Group January 10, 2008**

#### **Topic: Dealing With Fear**

We discussed our thoughts and experiences with fear. People talk about “good fear” and “bad fear”. When fear protects us from a danger, it's good. When it causes us to worry, consume energy and keep us from talking action, it's bad. What does fear feel like?

- Your breathing is rapid
- Your pulse increases
- Your hands may shake
- Your system is revved up

What's the best way to deal with fear?

Understand your fears and accept your feelings. When doing something that makes you fearful, make sure you have prepared and trained to deal with it.

Go through the fear to the far side of it and show up! The worst part is the anticipation.

Some feel that fear helps us find our true purpose. We all know that it can take lots of our time and energy. Learning to deal with our fear can help us enjoy life more.

*Bob Farnquist, January 12, 2008*

### **Men's Breakfast Report Saturday, Jan. 5, 2008**

A well-attended first breakfast meeting of the new year greeted guest speaker Jim Livingstone, CPA, who delivered his annual tips on taxes and what's new and what's of benefit to you. Let's get right to Jim's advice:

“A new law effective for the 2008 tax returns results in many taxpayers being eligible to sell stocks, property or other investments incurring capital gains

and paying no federal income tax on the gain. Ordinary federal tax rate brackets are 10%, 15%, 25%, 28%, 33% and 39%. If you have capital gains for property held over one year, there are special capital gain rates. For years 2008 through 2010, the maximum capital gain rate is 15%. If a taxpayer is in the 10% or 15% bracket, the capital gain rate is now zero. The capital gain is in effect tax free income. To be in the 15% tax bracket for a married couple filing a joint tax return, the taxable income must be \$65,000 or less. That is taxable income, which means the gross income less all itemized deductions and exemptions. A married couple could have income of \$80,000, \$90,000 or more and still have a taxable income of \$65,000 or less and be in the 15% bracket. For a single person to be in the 15% tax bracket and pay no capital gains tax, the taxable income must be \$32,000 or less.

Qualifying dividends on domestic stocks are also taxed at capital gain rates, so these dividends will also be tax free federal for those in the 10% or 15% bracket.

For people in the 15% bracket, smart tax planning for 2008 would be to sell investments to keep total taxable income under the \$65,000 amount and pay no tax on the capital gains. Even if you buy the investment back the next day, you will have generated capital gains and paid no federal tax and now have a higher cost basis in the investment.

For people who are in the 25% bracket and higher, smart tax planning would be to make gifts of stocks or other investments to children or parents and let them sell the assets and incur no capital gains. There is a "kiddie tax" for dependant children under 18 and some students under 24 that must be considered however.

These rates are in effect through 2010 and then the capital gain rate goes to 20%. As Congress has the authority to change these rates at any time, I think one should avail themselves of this special zero percent tax rate during 2008 and not wait for a later year.

The state of California has no provisions for special rates for capital gains and all capital gains are taxed at ordinary rates, which range from 1% to 9.3%. State tax law will be paid on all capital gains for 2008."

Veteran breakfast chair Dr. Dick Okamura ably handled the introductions and the breakfast cooking crew included master chef Stan Yumen and colleagues Jim Wright, Dick Shipe, Hi-Dong Chai and Dave Crowley.

*Dave Crowley*



*The Ladies of ANUCC are invited to*  
THE ANNUAL MEN'S CLUB  
LOVEFEST BREAKFAST

SAT. FEB 9TH  
8 A.M. - 10 AM

- ♥ *Fabulous food*
- ♥ *Great Music*
- ♥ *Exciting Conversation*
- ♥ *Memorable Gifts*

The men are invited too, and are encouraged to volunteer to help make this Lovefest a success.

*Baby Sitting will be available*



## February Birthdays

Lynn Widman	Feb. 7
Tommy Haley	Feb. 10
Angela Smith	Feb. 10
Laura Click	Feb. 13
Orlon Wiedrick	Feb. 17
Phyllis Green	Feb. 19
Byron Henderson	Feb. 20
Anthony Sunseri	Feb. 23
Matthew Click	Feb. 24
Shirley Lind	Feb. 24

## February Anniversaries

Jim & Ruth Breseke	Feb. 18
Byron & Marian Henderson	Feb. 19

## February Worship

<u>Sermons</u>	<u>Rev. Kevin Smith</u>	<u>268-0243</u>
Feb. 3:	Rev. Kevin Smith	
Feb. 10:	Rev. Kevin Smith	
Feb. 17:	Rev. Kevin Smith	
Feb. 24:	Tom Rose	

<u>Lay Readers</u>	<u>TBD</u>	
Feb. 3:	Sandy Baldwin	
Feb. 10:	Kathy Kisabeth	
Feb. 17:	Betsy Shoup	
Feb. 24:	(special guest appearance)	

<u>Ushers</u>	<u>Dot Allfrey</u>	<u>268-2973</u>
Feb. 3:	Dave Harris, Dave Crowley Harriet Yamada	
Feb. 10:	The Daley Family	
Feb. 17:	TBD	
Feb. 24:	TBD	

<u>Greeter/ Coffee Hosts</u>	<u>Carol Pullen</u>	<u>842-3653</u>
Feb. 3:	The Balleks	
Feb. 10:	The Gaydons	
Feb. 17:	Linda Farr & Dave Harris	
Feb. 24:	TBD	

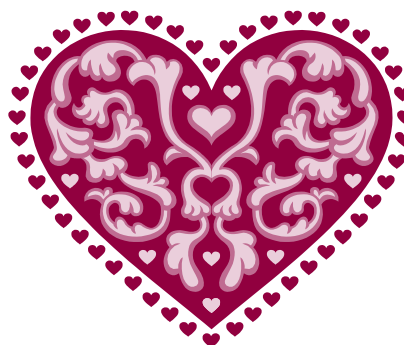
<u>Communion</u>	<u>Kathy Kisabeth</u>	<u>227-3898</u>
Feb. 3	Kathy Kisabeth	

<u>Breakout</u>	<u>Tami Nieders</u>	<u>268-7681</u>
Feb. 10	The Gaydons	
Feb. 17	The Grahams	
Feb. 24	Carolyn Dingman (bread-making)	

<u>Flowers</u>	<u>TBD</u>	
Feb. 3:	Athena Ballek	
Feb. 10:	Robyn Dorsey	
Feb. 17:	TBD	
Feb. 24:	TBD	

<u>Caring</u>	<u>Ariss Thomas</u>	<u>997-1916</u>
<u>Committee</u>	<u>Carolyn Crowley</u>	<u>997-0819</u>
<u>Co-chairs</u>	<u>Linda Farr</u>	<u>268-6506</u>
<u>Feb.-Mar.</u>	<u>Carolyn Dingman</u>	<u>267-7785</u>

*We look forward to the time  
when the power to love will  
replace the love of power.  
Then will our world know the  
blessings of peace."*  
-- William Gladstone



## FEBRUARY 2008

	Sunday	Monday	Tuesday	Wednesday	Thursday	Friday	Saturday
27	Folk Sunday WOMEN'S NETWORK WINTER RETREAT 7:30 AM ECA Holy Eucharist 9:00 AM AVUCC Worship 10:10 AM Sunday School 11:00 AM ECA Holy Eucharist 2:30 PM Belinda Tan Memorial Service	7:00 PM ECA Worship Committee meeting 7:30 PM Boy Scout Troop #294 meeting	10:00 AM Toddler Play Group 3:30 PM Girl Scout Troop #849 Meeting 7:30 PM AVUCC LRPC	9:30 AM Quest meeting 2:30 PM Girl Scout Troop #825 6:30 PM Wednesday Evening Bible Study 7:30 PM Shalom Choir Rehearsal	8:00 AM ECA Men's Breakfast 10:30 AM ECA Thursday Morning Bible Study 7:30 PM ECA Choir rehearsal	1	6:15 PM Dean Cook Organ Concert
3	<b>Transfiguration Sunday</b> 7:30 AM ECA Holy Eucharist 9:00 AM AVUCC Worship 10:10 AM Sunday School 11:00 AM ECA Holy Eucharist 6:00 PM JHYG meeting	7:00 PM JV Duplicate Bridge 7:30 PM Boy Scout Troop #294 meeting	10:00 AM Toddler Play Group 1:00 PM Christian Ed. staff meeting 2:00 PM JV Staff meeting 3:00 PM JHYG & SHYG Shrove Tuesday Cooking 6:30 PM Almaden Valley Women's Club 7:00 PM Christian Ed Committee Meeting	6 Ash Wednesday 7:30 AM ECA Ash Wednesday AM Service 9:30 AM Quest meeting 1:30 PM Girl Scout Troop #180 6:30 PM AVUCC Folk Choir rehearsal 6:30 PM Wednesday Evening Bible Study 7:30 PM ECA Ash Wednesday PM Service	7 10:30 AM ECA Thursday Morning Bible Study 3:15 PM Girl Scout Troop #1365 meeting 7:15 PM Men's Discussion Group	8 9:00 AM Assistance League of San Jose 3:00 PM Montgomery Meals	9 Aluminum Cans for Habitat for Humanity 8:00 AM AVUCC Men's Breakfast
10	Aluminum Cans for Habitat for Humanity <b>First Sunday of Lent</b> Folk Sunday 7:30 AM ECA Holy Eucharist 9:00 AM AVUCC Worship 10:10 AM Sunday School 11:00 AM ECA Holy Eucharist 6:00 PM SHYG meeting	11 7:30 PM Boy Scout Troop #294 meeting	12 10:00 AM Toddler Play Group #849 Meeting 7:00 PM AVUCC Council Meeting 7:00 PM ECA Vestry Meeting	13 9:30 AM Quest meeting 6:30 PM Wednesday Evening Bible Study 7:30 PM Shalom Choir Rehearsal	14 <b>Valentine's Day</b> 10:30 AM ECA Thursday Morning Bible Study 7:30 PM ECA Choir rehearsal	15 The Shape and Kalos Newsletter Deadline	16 Karen Hook Students Piano Recital
17	JHYG Outing 7:30 AM ECA Holy Eucharist 9:00 AM AVUCC Worship 10:10 AM Sunday School 11:00 AM ECA Holy Eucharist	18 JV Office Closed <b>Presidents' Day</b> 7:30 PM Boy Scout Troop #294 meeting	19 10:00 AM Toddler Play Group 1:00 PM Christian Ed. staff meeting 2:00 PM JV Staff meeting 4:15 PM AVUCC Shelter Food Service 7:30 PM JV Board Meeting	20 9:30 AM Quest meeting 7:30 PM Shalom Choir Rehearsal	21 10:30 AM ECA Thursday Morning Bible Study 1:00 PM Unicorn Thrify Shop Board Meeting 3:15 PM Girl Scout Troop #1365 meeting 7:30 PM ECA Choir rehearsal	22 3:00 PM Montgomery Meals	23
24	SHYG Outing 7:30 AM ECA Holy Eucharist 7:45 AM AVUCC Breadmaking 9:00 AM AVUCC Worship 10:10 AM Sunday School 11:00 AM ECA Holy Eucharist	25 7:00 PM San Jose Area Home Economists - A Closer Look at eBay 7:30 PM Boy Scout Troop #294 meeting	26 10:00 AM Toddler Play Group 3:30 PM Girl Scout Troop #849 Meeting 7:30 PM AVUCC LRPC	27 9:30 AM Quest meeting 7:30 PM Shalom Choir Rehearsal	28 10:30 AM ECA Thursday Morning Bible Study 7:30 PM ECA Choir rehearsal	29	1 8:00 AM AVUCC Men's Breakfast 7:30 PM WWQ5 Concert

# -Daily Lectionary-

## February 2008

*These lectionary readings are from A Daily Lectionary-Scripture readings for Every Day based on the New Common Lectionary. Please share this resource with members of your church.  
\*The readings listed for Sundays are from the UCC Desk Calendar and are not part of the daily lectionary cycle.*

Day	Date	Old Testament	New Testament	Epistle
Fri	Feb 1	Isa 49 :1-12	Luke 4:31-37	1 Cor 4:1-5
Sat	Feb 2	Isa 49:13-23	Luke 4:31-37	1 Cor 5:1-5
<b>*Sun</b>	<b>Feb 3</b>	<b>Ex 24:12-18</b>	<b>Matt 17:1-9</b>	<b>2 Pet 1:16-21</b>
Mon	Feb 4	Amos 5:6-15	Matt 17:9-13	Gal 2:1-10
Tues	Feb 5	Jon 3:1-4:11	Matt 7:21-29	Gal 2:11-21
Wed	Feb 6	Joel 2:1-2,12-17a	Matt 6:1-6,16-21	2 Cor 5:20b-6:10
Thurs	Feb 7	Lev 25:35-55	Matt 8:1-13	Gal 3:1-5
Fri	Feb 8	Lev 26:1-20	Matt 8:14-22	Gal 3:6-14
Sat	Feb 9	Lev 26:27-42	Matt 8: 23-34	Gal 3:15-20
<b>*Sun</b>	<b>Feb 10</b>	<b>Gen 2:15-17,3:1-7</b>	<b>Matt 4:1-11</b>	<b>Rom 5:12-19</b>
Mon	Feb 11	Jer 10: 1-10	Matt 9:1-9	Gal 3:21-29
Tues	Feb 12	Jer10:11-16.23-25	Matt 9:10-17	Gal 4:1-7
Wed	Feb 13	Deut 8:1-10	Matt 9:18-26	Gal 4:8-14
Thurs	Feb 14	Deut 8:11-20	Matt 9:27-38	Gal 4:15-20
Fri	Feb 15	Deut 9:4-12	Matt 10:1-15	Gal 4:21-31
Sat	Feb 16	Deut 9:13-21	Matt 10:16-23	Gal 5:1-6
<b>*Sun</b>	<b>Feb 17</b>	<b>Gen 12:1-4a</b>	<b>John 3:1-17</b>	<b>Rom 4:1-5,13-17</b>
Mon	Feb 18	Deut 9:23-10:5	Matt 10:24-33	Gal 5:7-12
Tues	Feb 19	Deut 10:12-22	Matt 10:34-42	Gal 5:13-18
Wed	Feb 20	Isa 58:1-5	Matt 11:1-15	Gal 5:19-26
Thurs	Feb 21	Isa 58:6-14	Matt 11:16-30	Gal 6:1-6
Fri	Feb 22	Ezek 28:1-10	John 6:1-15	Gal 6:7-18
Sat	Feb 23	Ezek 28:11-19	John 6:16-27	2 Cor 1:1-11
<b>*Sun</b>	<b>Feb 24</b>	<b>Ex 17:1-7</b>	<b>John 4:5-42</b>	<b>Rom 5:1-11</b>
Mon	Feb 25	Ezek 30:1-9	John 6:27-40	2 Cor 1:12-22
Tues	Feb 26	Ezek 31:1-11	John 6:41-51	2 Cor 1:23-2:17
Wed	Feb 27	Ezek 33:1-11	John 6:52-59	2 Cor 3:1-18
Thurs	Feb 28	Ezek 33 ;12-20	John 6:60-71	2 Cor 4:1-6
Fri	Feb 29	Ezek 33:21-33	John 7:1-13	2 Cor 4:7-15



**Provided by**  
**The Massachusetts Conference, United Church of Christ**  
*...nurturing local church vitality and the covenant among our churches.*

Made possible by your contributions to  
*Our Church's Wider Mission* Basic Support and Fellowship Dues

Perforation parallel

Perforation parallel

Almaden Valley United Church of Christ  
6581 Camden Avenue  
San Jose, CA 95120  
(408) 268-0243

Return Service Requested

Non-Profit  
Organization  
U.S. Postage  
PAID  
Permit No. 37  
New Almaden, CA  
95042



## **KALOS—February 2008**

**Monthly Newsletter for the  
Almaden Valley United Church of Christ  
6581 Camden Ave., San Jose, CA 95120**

The deadline for the **March** issue of the Kalos is **Friday, February 15th**. Email you items to: [kalos@avucc.org](mailto:kalos@avucc.org) or leave items in the mail slot labeled Kalos.

Questions—Contact one of the editors:  
Sue Scaff (448-3038) or  
Kelly Yamanishi (997-3373)

Perforation parallel

Perforation parallel

## **Some Thoughts on the Altar**

Members of both congregations have asked me to write an article on the new altar so here it is. About seven years ago, how we used our sanctuary was changing. Besides worship, it was now used for John Leslie's musical productions, Adventures in the Arts, plays, community meetings, concerts and Boy Scout Courts of Honor. Nolan Redman and Julianne Stockstad, our former pastors, approached me, about designing a new altar. They wanted an altar that would be easily moved. I spent many hours praying, researching, sketching, meditating on this and I consulted with Steve Penny, my stepson, and a furniture design major who teaches at College of the Arts. I measured the old altar, the stairwells and the elevator to accommodate moving the altar. After I decided on a basic design, I made scale drawings and a working model out of wood and presented it to both pastors and various groups to get feedback.

In order to keep the altar as light as possible, I decided on a combination of walnut and alder wood (no pun intended). Ron Howie mentioned that his brother, Doug, in Oregon, had a mill and he would mill trees for clients in exchange for half the wood. I gave Ron a materials list that he sent to Doug. Walt and Charlotte Boileau also donated cherry wood left over from Walt's woodworking days.

After Doug found and cut the wood, Ron drove in his truck to Oregon and hauled it back. I took the wood to my stepson, Dave Penny, also gave a lot of valuable input. He had the quality tools and the skills to help me make the altar a reality. We spent a lot of time discussing many options in the design and we laminated altar construction times into David's busy schedule as a general contractor. Dave's help was invaluable in making this project possible.

## **Symbolism in the Altar**

As a symbol, United Church of Christ folk like to have a table for worship and Episcopal folk like to have an altar. As a result, the design became a "gate leg table altar" in order to accommodate both traditions. The walnut and alder woods blend together in the design like our two bodies of believers that blend together. The glue that holds the two woods together is like the common love we have for Christ and is a symbol of the great potential we have when we work together for the common good and to glorify God.

The gate legs are like a prayer gate opening to anyone who enters our sanctuary for prayer, meditation, praise, celebration and thanksgiving.

Each side of the altar top folds down to create a smaller altar table when we have a large gathering and need more space for people. We know that the real church is not the building, but rather those who gather to share God's love in common experience.

The Celtic cross on the front is made of zebrawood.

Inside the circle, carved from cherry wood, is the hand of man reaching up in praise and supplication and the hand of God reaching down in blessing. This reminds us that God is always patiently waiting for us, and we can become the hands to do God's work here on Earth.

Lao Tze said that spokes in a wheel become useful because of the space created between them. The clay in a pitcher is useful because of the hollow space it creates. Doors and windows are used for their emptiness. Thus we are helped by what is not, to use what is. And so it is with the spaces that are created by the altar's form. The negative space created by the form of the altar is a symbol of God's love and unseen presence among us. This space also symbolizes the creative power of the Holy Spirit that can change us and challenge us to come together, do good works and glorify God. Think on this when you come to the sanctuary. May it help you connect with God as you go on your own spiritual journey.

